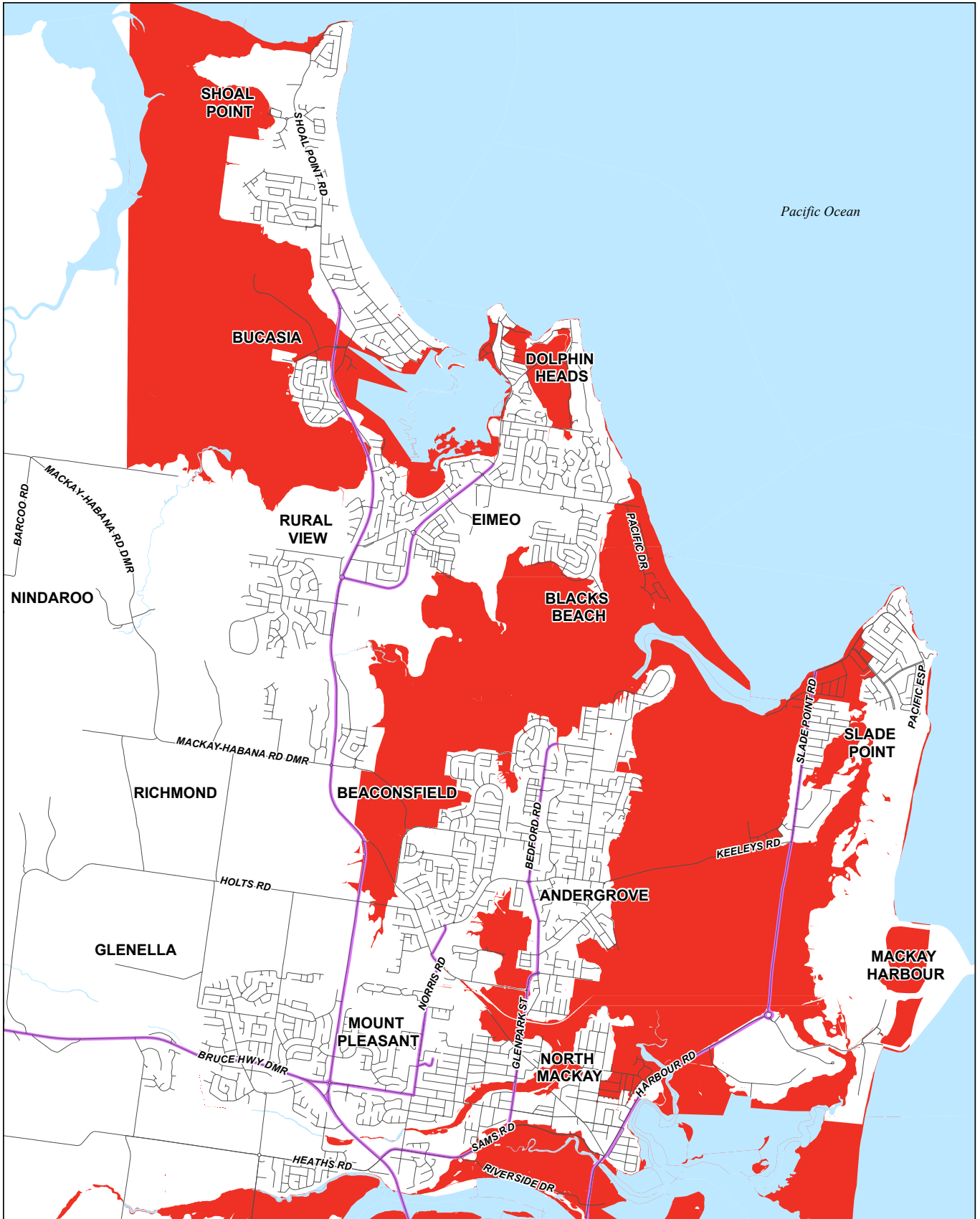


# STORM TIDE INUNDATION AND EVACUATION MAPS

# EVACUATION ZONE: RED - NORTH

Up to 1 metre > HAT






PRODUCED BY MACKAY REGIONAL COUNCIL - GIS SECTION

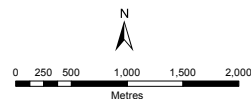
Based on Cadastral Data provided with the permission of the Department of Natural Resources and Mines (DNRM).

CURRENT AS AT MAY 2014

While every care is taken to ensure the accuracy of this data, the Department of Natural Resources and Mines and Mackay Regional Council give no warranty in relation to the data (including accuracy, reliability, completeness or suitability) and accepts no liability (including without limitation, liability in negligence) for all expenses, losses, damages (including indirect or consequential damage) and costs which you might incur as a result of the data being inaccurate or incomplete in any way and for any reason.

## MACKAY URBAN NORTH

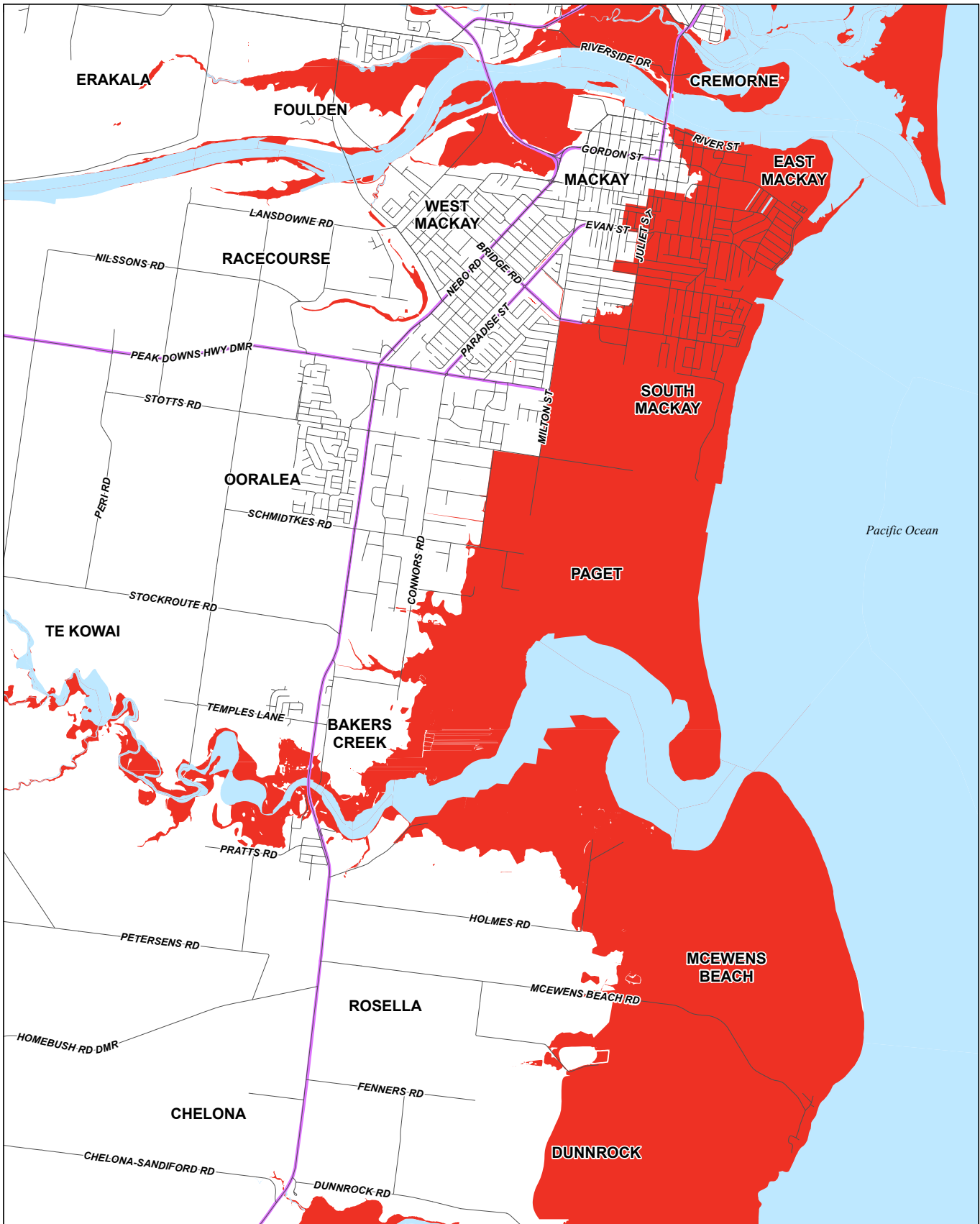
-  Evacuation Routes
-  Evacuation Zone
-  Above Evacuation Zone



# EVACUATION ZONE: RED - SOUTH

Up to 1 metre > HAT

# STORM TIDE INUNDATION AND EVACUATION MAPS






PRODUCED BY MACKAY REGIONAL COUNCIL - GIS SECTION

Based on Cadastral Data provided with the permission of the Department of Natural Resources and Mines (DNRM).

CURRENT AS AT MAY 2014

While every care is taken to ensure the accuracy of this data, the Department of Natural Resources and Mines and Mackay Regional Council give no warranty in relation to the data (including accuracy, reliability, completeness or suitability) and accepts no liability (including without limitation, liability in negligence) for all expenses, losses, damages (including indirect or consequential damage) and costs which you might incur as a result of the data being inaccurate or incomplete in any way and for any reason.

## MACKAY URBAN SOUTH

-  Evacuation Routes
-  Evacuation Zone
-  Above Evacuation Zone

